



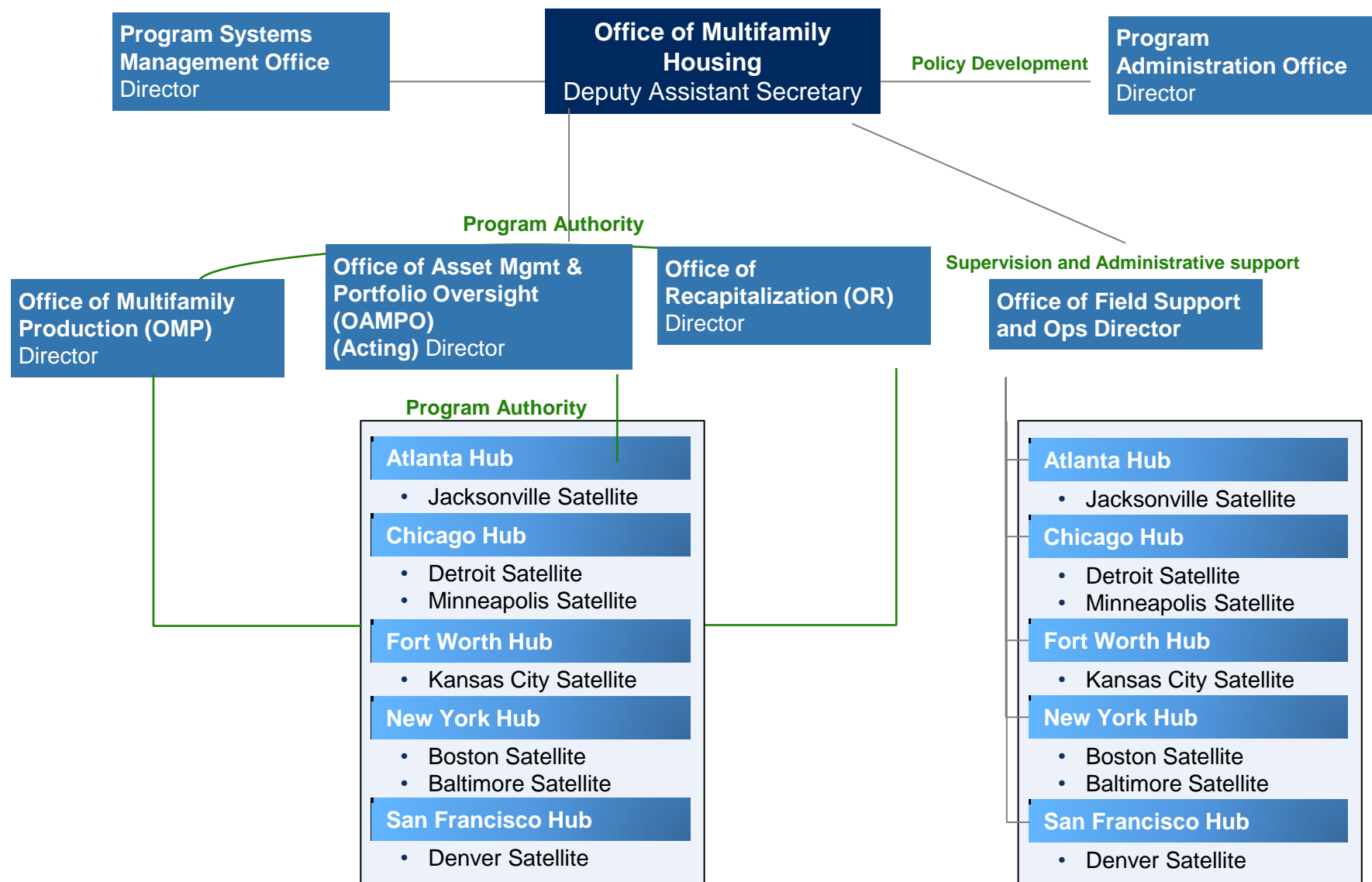
MFH Org Charts-HQ Only



This document contains pre-decisional opinions, advice, and recommendations that are offered as part of deliberations necessary to the formulation of government policies and processes. It is protected from disclosure under the Freedom of Information Act ("FOIA") pursuant to the Deliberative Process Privilege under 5 U.S.C. § 552(b)(5). This document also contains commercially sensitive and confidential proprietary and trade secret information that is exempt from disclosure under Section (b)(4) of FOIA, 5 U.S.C. § 552 et seq.

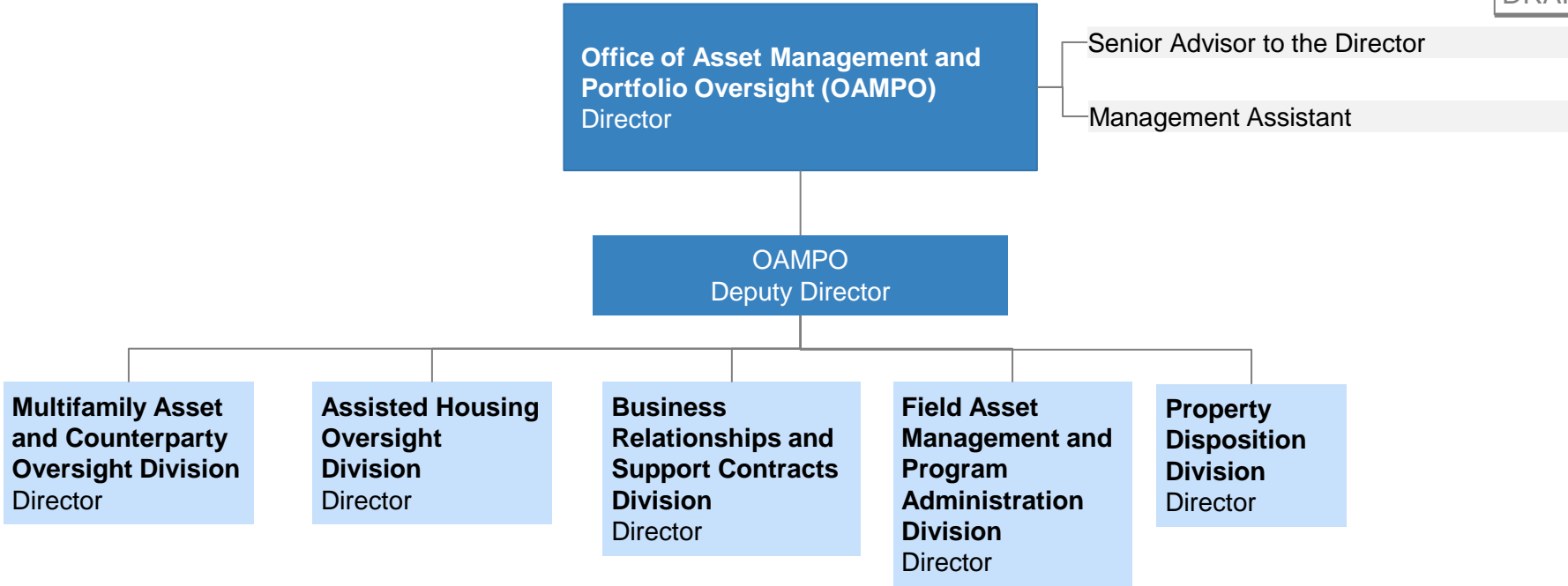
PRE-DECISIONAL, PROPRIETARY AND CONFIDENTIAL

MFH headquarters organization



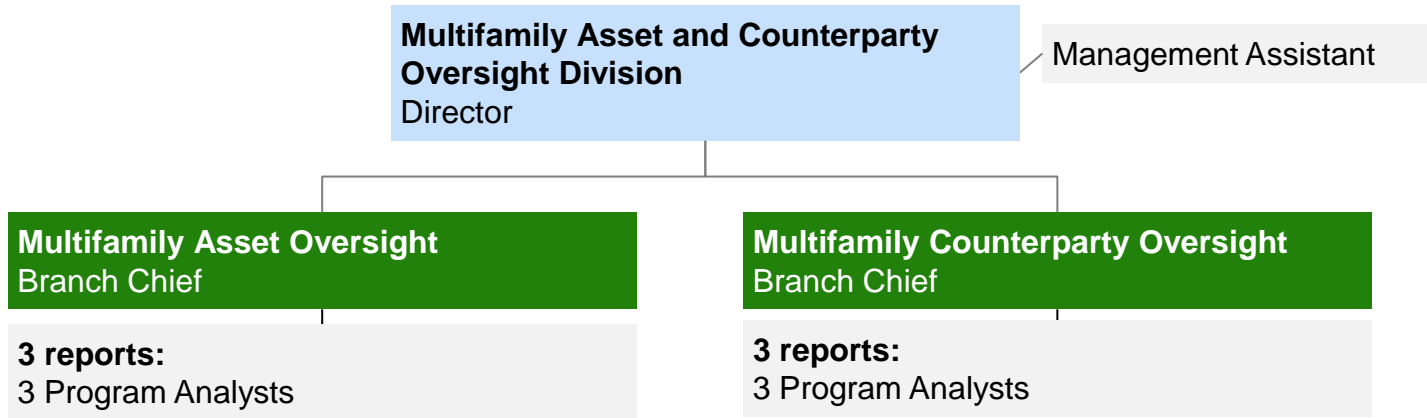


DRAFT



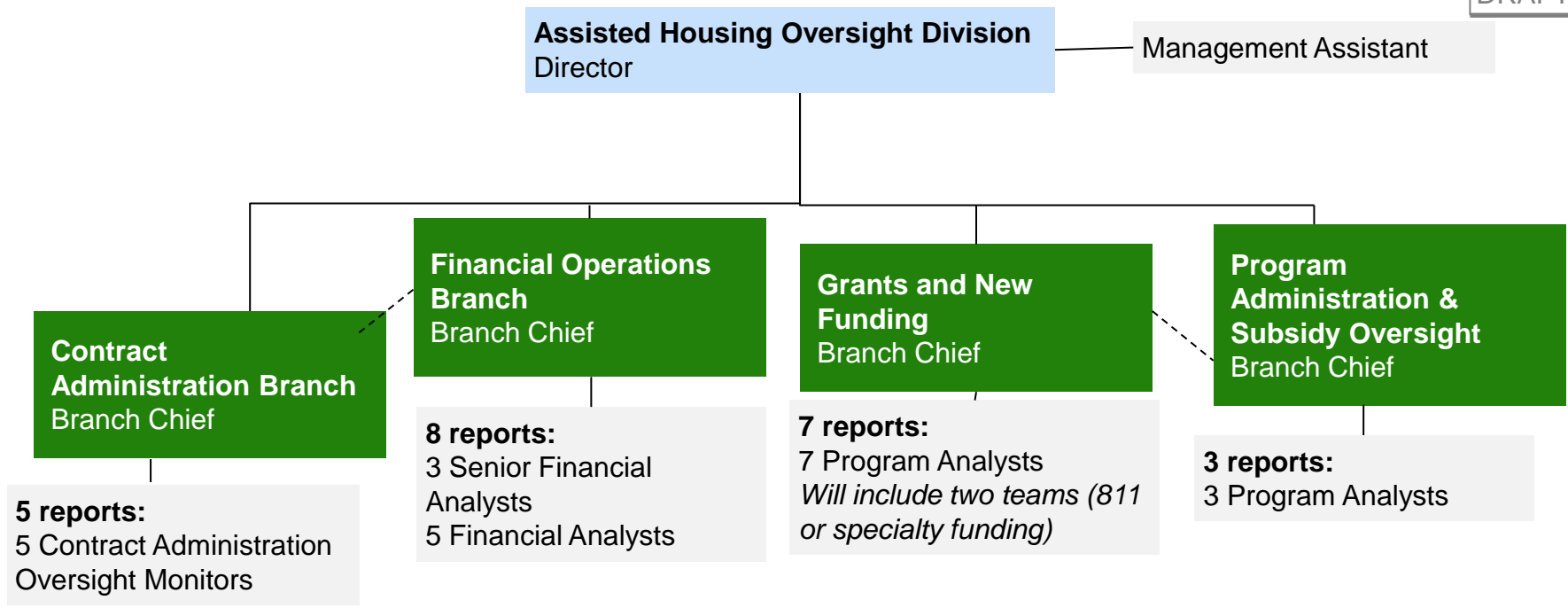


DRAFT



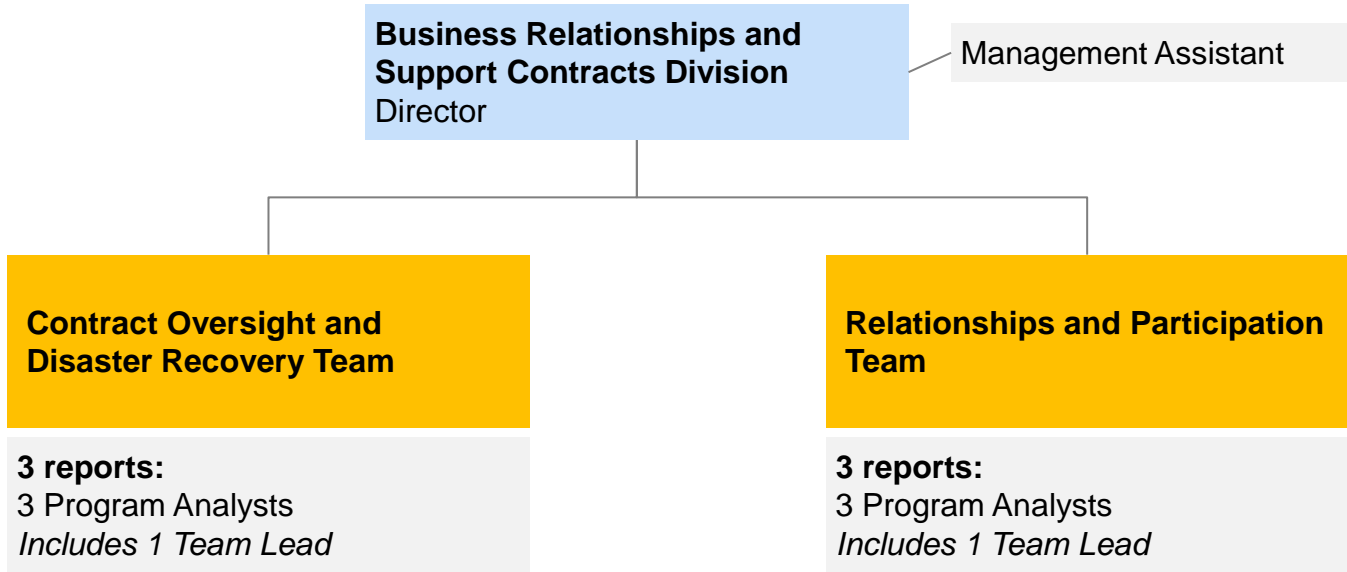


DRAFT





DRAFT





DRAFT

Field Asset Management and Program Administration Division
Director

Management Assistant

Program Administration Office
Director

7 reports:
7 Program Analysts

Branch A
Supervisory Account Executive Branch Chief

5 reports:
5 Account Executives

Branch B
Supervisory Account Executive Branch Chief

5 reports:
5 Account Executives

Branch C
Supervisory Account Executive Branch Chief

5 reports:
5 Account Executives



**Property Disposition Division
(Fort Worth)**
Director **Scott Bearden**

Management Assistant

10 reports, including:
2 Senior Realty Specialists
6 Realty Specialists
1 Construction Analyst
1 Contract Specialist